

Introducing M.I.Data Solutions Ltd

WEBINAR:

MAX Mobile Workstation

Date: Wed 25th November

Time: 14:00pm

“Why take thousands of steps when you can take one simple one?”



A change in process?

Goods In / Cross Docking:

1. Match the delivery to a purchase order
2. Inspect delivery
3. Log items into inventory
4. Allocate space for **putaway**
5. Process goods for Cross-docking

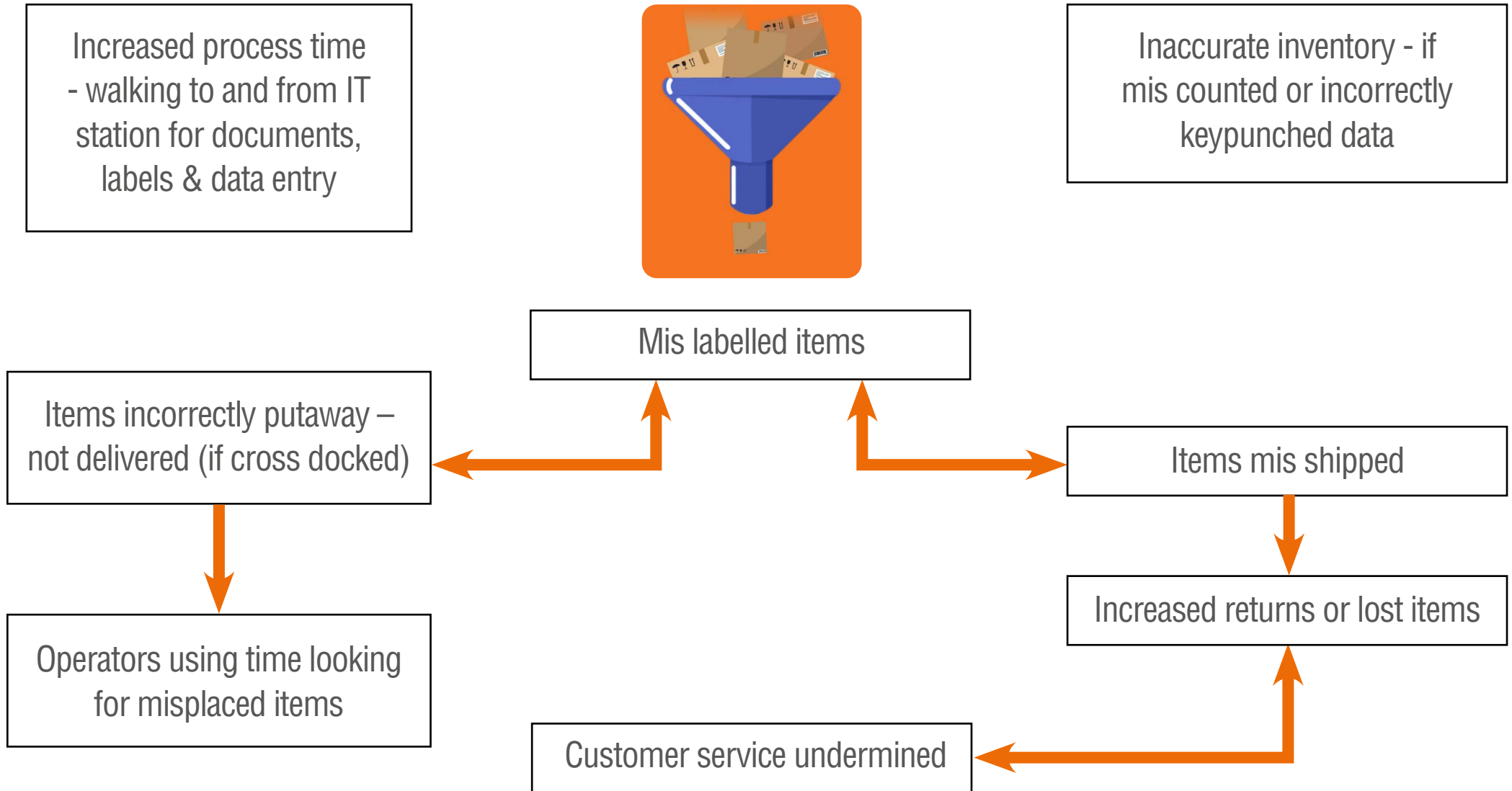


Manual Process - Pen & Paper

- Walk to fixed IT position to print documents
- Check goods against paperwork and manually count/record items
- Walk back to fixed IT positions
- Keypunch data
- Print labels/documents
- Walk back to goods and apply labels/documents



What bottlenecks can occur?



What is this costing you?

Notional Figures

10 minutes of every working hour (8-hour shift) walking to and from fixed IT stations

At an **hourly labour cost of £25 = £35 approx.**

And an additional **10 minutes** in every shift spent looking for misplaced items (**£5**) = **£40**

5 days a week:

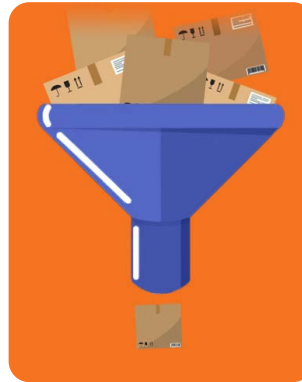
£40 per day (x 5) =

£200 a week (x 4) =

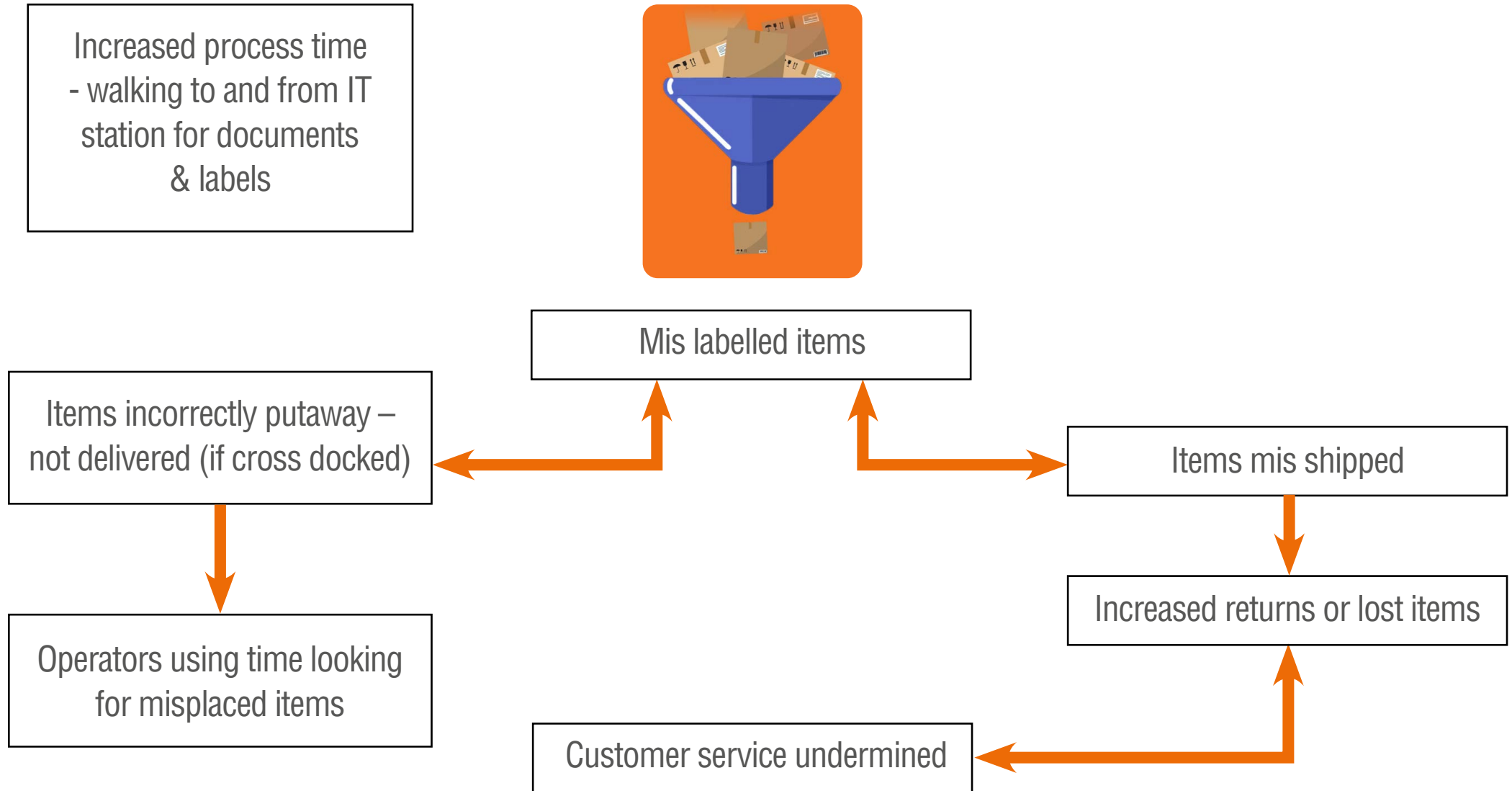
£800 a month (x 12) =

£9,600 a year per operator

Process w/handheld computer



What bottlenecks can occur?



What is this costing you?

Notional Figures

5 minutes of every working hour (8-hour shift) walking to and from fixed IT stations

At an **hourly labour cost of £25 = £20 approx.**

And an additional **10 minutes** in every shift spent looking for misplaced items (**£5**) = **£25**

5 days a week:

£25 per day (x 5) =

£125 a week (x 4) =

£500 a month (x 12) =

£6,000 a year per operator

Benefits of using a Mobile Workstation

- All IT resources, stationery & tools at the point of activity
- Reduced process time
- Real-time data entry
- Significantly reduced labelling errors
- Eliminate paper work

A mobile workstation can effectively be deployed throughout the logistics process



Goods In / Cross-docking & Goods Out

- Reduced process time
- Increase speed and work volumes
- Significantly reduce labelling errors
- Real-time data entry
- **Ensure on-time shipments**
- Eliminate paper work



Packing

- Reduced process time
- Real time data entry
- Increase accuracy
- **Create temporary packing stations for peak demand i.e. Black Friday**
- Eliminate paper work



Returns/Reverse Logistics

- Reduced process time
- Real time data entry
- **Quickly process items back into inventory**
- **Credit customers immediately**
- Eliminate paper work



Customer Success Stories



There are 5 MAX models in the range



MAX 200 SERIES
single tower model

Power limited IT
resources for single
shift working



**MAX STANDARD
SERIES**

Power all IT resources
for single shift working



**MAX BWS-R
SERIES**

with battery
roll-change system
For 24 hour or
multi-shift operations
Rapid and efficient
battery change enabled



**MAX LI-ION
SERIES**

with Lithium-ion batteries
For 24-hour or
multi-shift operations
Fast charge capability



MAX TK SERIES
cold store/freezer version

Operates down to -28°C
24 DC power only
No inverter

ROI Presentation

1 shift per day, 5 days a week,

45 minutes

process time saving

MAX STD 300 w/Large tabletop,

Dual Pillar support & 165mm draw

ROI Presentation



ROI Calculator for MAX Mobile Workstation

COST OF MAX (including all/any accessories)

Price	£3,435.00
Hourly Operating Overhead	£25.00
Time Saving Per Shift <i>(Reduced process time - walking to and from fixed IT stations & real time data entry)</i>	00:45:00
Number of shifts per day	1
Cost Saving per day	£18.75
Number of days per week	5
Cost Saving per week	£93.75

RETURN ON INVESTMENT

ROI =	9	Months
-------	---	--------



Warehouse Overview

Streamline logistics processes
in your distribution centre with MAX...



The latest valued
member of the team.

Thank you

t: 01425 489 234

e: sales@midsl.co.uk

w: midsl.co.uk

Specialists in portable data collection systems

