

VEHICLE MOUNT TERMINALS



Specialists in portable data collection systems

MFT 10/12/15



Designed and manufactured to the highest quality standards for the most demanding work environments. Streamline materials handling and other challenging logistics processes with the ACD MFT Vehicle Mount Terminal.

The MFT can be mounted on any forklift or warehouse vehicle or as an additional option with the ACD MAX Mobile Workstation. Available with a 10", 12" or 15" TFT touch sensitive display with LED backlight, virtual on-screen keyboard and five user programable function keys; ACD's own Android™ Industrial+ Operating System ensures flawless reliability.

Built in a sealed diecast aluminium casing (IP65) with chemically hardened screen the MFT range is sunlight readable and has automatic transfer between ambient and freezer temperatures, making the MFT a versatile solution for any supply chain operation.

Android™ Industrial+ ACD Group's own operating system can be adapted to specific customer requirements. ACD provides post-sales support, incorporates security updates, troubleshooting and rapid response to security gaps. Data security is guaranteed - no data is transferred or can be shared with third parties.

- Android™ Industrial+ O/S - MFT 10 & 12
- Windows O/S - MFT 15 only
- Wide range of wireless and hardware connectivity capabilities.
- A choice of power and mounting accessories available



MFT10 with Android OS



MFT10 with keyboard



Quick exchange system with adaptor

Mounting kit RAM Mount



MFT10 with side keyboard

TECHNICAL SPECIFICATIONS

Case:	Aluminium, powder-coated
Shock/Vibration:	Complies with EN 60068-2 Part -6, -27
Protection Class:	IP65
Operating temperature:	-30 °C to 45 °C
Storage temperature:	-30 °C to 70 °C
Rel. humidity:	5 % to 95 % (in operation), non-condensing
Dimensions:	270 x 235 x 62 mm (W x H x D; without accessories)
Weight:	Approx. 2.8 kg (without accessories)
Power supply:	8.5 to 72V DC (electrically isolated)
Power consumption:	Approx. 19 W (as standard), max. 60 W (freezer use)
Display:	10.4" colour TFT display XGA with LED backlight, 1024 x 768 pixels, 350 cd/m², 2 status LEDs
Touchscreen:	Resistive, minimum surface hardness of 3H, with robust, chemically hardened beaming glass
Keyboard:	Virtual on-screen keyboard, 5 user programmable function keys
Graphics:	Integrated graphics unit, DirectX11 support
Processor:	Intel Celeron* Quad Core 4x 1.83 GHz (N2930, Bay Trail-M)
Memory:	64 GB flash, 4 GB RAM (DDR3L). Optional: 8 GB DDR3L
Operating system:	Android™** Industrial+
BIOS:	UEFI BIOS, update-capable, bootable from LAN or USB as standard
Interfaces:	Ethernet 100-BaseT/10-BaseT auto switch, RS232, 4x USB 2.0, integrated speaker with speech output quality, audio/microphone input via jack plugs

SPECIAL FEATURES

- Integrated battery for up to 1.5 hours (typical) running time, 2 integrated antennae, fan-less design
- Device start-up and shutdown via user definable function keys (ATX function) or via vehicle ignition
- Sunlight readable

OPTIONS

- WLAN IEEE 802.11a/b/g/n/ac incl. BT-compatible close-range network
- WLAN Security¹: WPA, IEEE802.11i (Personal and Enterprise), WPA2, WPA2-PSK 802.1x: PEAP-MSCHAPv2, PEAP-GTC, PEAP-TLS, EAP-TLS, EAP-TTLS, EAP-FAST, LEAP

ACCESSORIES

- Different vehicle mounts
- Quick exchange system
- Keyboardholder with keyboard

* Registered trademark – Intel Celeron
** Registered trademark - Android™
Android is a trademark of Google LL

¹Standard codification validated by ACD
Subject to technical modifications



MFT12 with Android OS



MFT12 with keyboard



Quick exchange system with adaptor

Mounting kit RAM Mount



MFT12 with side keyboard

TECHNICAL SPECIFICATIONS

Case:	Aluminium, powder-coated
Shock/Vibration:	complies with EN 60068-2 Part -6, -27
Protection Class:	IP65
Operating temperature:	-30 °C to 45 °C
Storage temperature:	-30 °C to 70 °C
Rel. humidity:	5 % to 95 % (in operation), non-condensing
Dimensions:	308 x 268 x 63 mm (W x H x D; without accessories)
Weight:	Approx. 3.6 kg (without accessories)
Power supply:	9 to 72V DC (electrically isolated)
Power consumption:	Approx. 19 W (as standard), max. 60 W (freezer use)
Display:	12.1" colour TFT display XGA with LED backlight, 1024 x 768 pixels, 500 cd/m ² , 2 status LEDs
Touchscreen:	Resistive, minimum surface hardness of 3H, with robust, chemically hardened beaming glass
Keyboard:	Virtual on-screen keyboard, 5 user programmable function keys
Graphics:	Integrated graphics unit, DirectX11 support
Processor:	Intel Celeron* Quad Core 4x 1.83 GHz (N2930, Bay Trail-M)
Memory:	64 GB flash, 4 GB RAM (DDR3L). Optional: 8 GB DDR3L
Operating system:	Android™** Industrial+
BIOS:	UEFI BIOS, update-capable, bootable from LAN or USB as standard
Interfaces:	Ethernet 100-BaseT/10-BaseT auto switch, RS232, 4x USB 2.0, integrated speaker with speech output quality, audio/microphone input via jack plugs

SPECIAL FEATURES

- Integrated battery for up to 1.5 hours (typical) running time, 2 integrated antennae, fan-less design
- Device start-up and shutdown via user definable function keys (ATX function) or via vehicle ignition
- Sunlight readable

OPTIONS

- WLAN IEEE 802.11a/b/g/n/ac incl. BT-compatible close-range network
- WLAN Security1: WPA, IEEE802.11i (Personal and Enterprise), WPA2, WPA2-PSK 802.1x: PEAP-MSCHAPv2, PEAP-GTC, PEAP-TLS, EAP-TLS, EAP-TTLS, EAP-FAST, LEAP

ACCESSORIES

- Different vehicle mounts
- Quick exchange system
- Keyboard holder with keyboard

* Registered trademark – Intel Celeron
** Registered trademark - Android™
Android is a trademark of Google LL

1Standard codification validated by ACD
Subject to technical modifications



MFT15



MFT15 with keyboard



Mounting kit
RAM Mount



MFT15 with RAM Mount



Quick exchange system with adaptor



Power pack

TECHNICAL SPECIFICATIONS

Case:	Aluminium, powder-coated
Shock/Vibration:	complies with EN 60068-2 Part -6, -27
Protection Class:	IP65
Operating temperature:	-30 °C to 45 °C
Storage temperature:	-30 °C to 70 °C
Rel. humidity:	5 % to 95 % (in operation), non-condensing
Dimensions:	366 x 311 x 71 mm (W x H x D; without accessories)
Weight:	Approx. 4.9 kg (without accessories)
Power supply:	9 to 72V DC (electrically isolated)
Power consumption:	Approx. 21 W (as standard), max. 60 W (freezer use)
Display:	15" colour TFT display XGA with LED backlight, 1024 x 768 pixels, 400 cd/m ² , 2 status LEDs
Touchscreen:	Resistive, minimum surface hardness of 3H, with robust, chemically hardened beaming glass
Keyboard:	Virtual on-screen keyboard, 5 user programmable function keys
Graphics:	Integrated graphics unit, DirectX11 support
Processor:	Intel Celeron* Quad Core 4x 1.83 GHz (N2930, Bay Trail-M)
Memory:	64 GB flash, 4 GB RAM (DDR3L). Optional: 8 GB DDR3L
Operating system:	Windows®** Embedded Standard 7 or Windows® 10 IoT Enterprise 2016 Alternative o/s available on request
BIOS:	UEFI BIOS, update-capable, bootable from LAN or USB as standard
Interfaces:	Ethernet 100-BaseT/10-BaseT auto switch, RS232, 4x USB 2.0, integrated speaker with speech output quality, audio/microphone input via jack plugs

SPECIAL FEATURES

- Integrated battery for up to 1.5 hours (typical) running time, 2 integrated antennae, fan-less design
- Device start-up and shutdown via user definable function keys (ATX function), via vehicle ignition
- Sunlight readable

OPTIONS

- WLAN IEEE 802.11a/b/g/n/ac incl. BT-compatible close-range network WLAN Security¹: WPA, IEEE802.11i (Personal and Enterprise), WPA2, WPA2-PSK 802.1x: PEAP-MSCHAPv2, PEAP-GTC, PEAP-TLS, EAP-TLS, EAP-TTLS, EAP-FAST, LEAP
- Ivanti® Products, SOTI® MobiControl

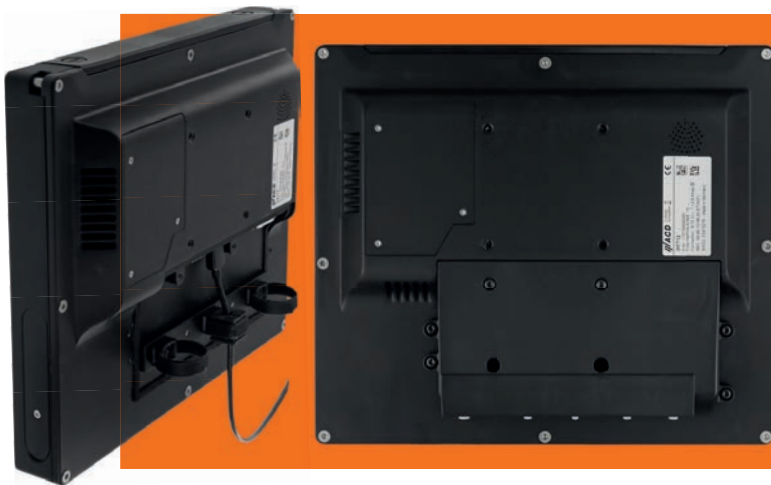
ACCESSORIES

- Different vehicle mounts
- Quick exchange system
- Keyboard holder with keyboard

* Registered trademark – Intel Celeron
** Registered trademark – Microsoft

¹Standard codification validated by ACD
Subject to technical modifications

The MFT can be mounted on any forklift or warehouse vehicle or as an additional option with the ACD MAX Mobile Workstation (shown here)



Built in a sealed diecast aluminium casing with chemically hardened screen the MFT range is sunlight readable and has automatic transfer between ambient and freezer temperatures making the MFT a versatile solution for any supply chain operation

CONTACT OUR SALES TEAM FOR MORE INFORMATION

 01425 489234  sales@midsl.co.uk  www.midsl.co.uk

